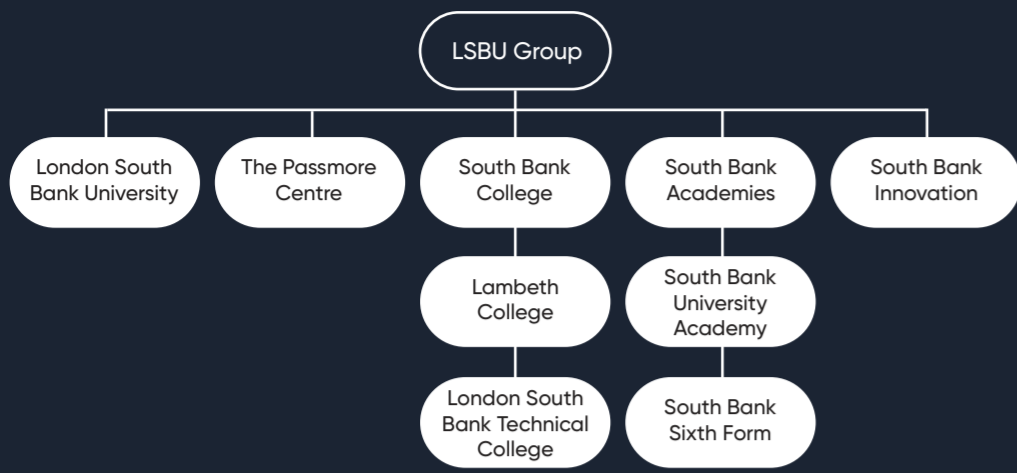


Fit for the future, ready for the real world.

Our goal is to help you succeed, no matter what your age, background, or educational experience. We provide career-focused pathways across all levels, from Entry to Level 8, providing high-quality education and sector specific learning to prepare you for your life beyond education and qualifications.



Joining LSBU Group gives our students unrivalled access to educational opportunities, advice and guidance as well as sought-after apprenticeships and work placements. Our students are guaranteed progression to both LSBTC and LSBU*.

Whether your next destination is within LSBU Group or elsewhere, we are one of a handful of providers who offer students the opportunity to progress to one of our new Level 4 one-year courses. Successful completion of this enables our students to fast-track to year 2 of an LSBU degree, saving money as well as providing a standalone qualification that employers recognise should you decide to leave your studies there.

*after successful completion of a group qualification that has a progression route

Further information about careers in Built Environment and Construction can be found here:

- www.careerpilot.org.uk
- www.nationalcareers.service.gov.uk
- www.startprofile.com
- www.prospects.ac.uk
- Building and Construction Careers: www.ciob.org
- Electrical Careers: www.niceic.com
- Plumbing Careers: www.ciphe.org.uk
- Quantity Surveying Careers: www.rics.org/uk
- Architectural Careers: www.ciat.org.uk

Places on Built Environment and Construction courses, at all levels, are highly sought-after every year. If you believe this is the career pathway for you, but you lack hands-on experience, then we advise you to seek a placement prior to applying.

The following websites are a great place to start:

- www.instituteforapprenticeships.org
- www.goconstruct.org
- www.targetcareers.co.uk/career-sectors/construction-and-property
- www.architecture.com/education-cpd-and-careers

Part of LSBU | GROUP

LAMBETH COLLEGE
Part of LSBU | GROUP

LONDON SOUTH BANK TECHNICAL COLLEGE
Part of LSBU | GROUP

South Bank University Academy
Part of LSBU | GROUP

SBU SIXTH
Part of LSBU | GROUP

LSBU
London South Bank University

LSBU | GROUP



BUILT ENVIRONMENT, CONSTRUCTION AND GREEN ENERGY

LSBU
London South Bank University

LAMBETH COLLEGE
Part of LSBU | GROUP

LONDON SOUTH BANK TECHNICAL COLLEGE
Part of LSBU | GROUP

South Bank University Academy
Part of LSBU | GROUP

SBU SIXTH
Part of LSBU | GROUP

The Need for Built Environment and Construction Roles

The Built Environment is everywhere—every home, road, and space we use is designed and built by skilled professionals. From shaping skylines to delivering sustainable solutions, careers in construction offer variety, stability, and the chance to make a real impact. If you want a future where your work transforms the world around you, this is the pathway for you.

The UK Built Environment & Construction industry in the UK is worth over **£568 billion**, & has over **325,000** companies, employing an estimated **3.7 million** people.

Greater London's construction sector needs over **5,000** new recruits every year to meet demand for housing, transport upgrades, & green infrastructure.

London's construction sector is set for steady growth of around **3.3%** annually, powered by housing, transport upgrades, & green infrastructure projects.

The fastest growth in construction is forecast in private housing, commercial development, infrastructure upgrades, and housing repair and maintenance—especially retrofit and green building projects.

An Introduction to Built Environment and Construction

The Built Environment is everything around us that has been created by humans for living, working, and connecting. It includes homes, schools, hospitals, offices, transport networks, utilities, and even the green spaces between buildings. Quite simply, it's the world we've built for human activity.

Construction on the other hand is the process of bringing these spaces to life – and keeping them functional through repair, maintenance, and improvement. From shaping skylines to delivering sustainable solutions, this sector is vital to everyday life.

Whether you enjoy hands-on work and want satisfaction of building something tangible, or you're drawn to design, planning, and management, there's a career path for you. The industry offers roles for every skill set—from practical trades to advanced technical and leadership positions.



I've always been curious about how buildings are made and how spaces can impact the way people feel, so studying Architectural Technology felt like the perfect fit for me. The course has allowed me to combine creativity with technical skills through real-world design projects that challenged me to think practically as well as creatively. Working on projects like designing a rehabilitation centre helped me understand how architecture and construction can positively affect people's lives. I've also developed valuable teamwork, problem-solving, and technical skills using industry-standard tools like AutoCAD and Revit, which has really grown my confidence.

Eva K
Sport Rehabilitation BSc (Hons)
LSBU



Is a career in Built Environment and Construction for me?

If you're curious about how buildings and infrastructure are designed and delivered, and you enjoy practical work or the satisfaction of creating something tangible, the construction industry could be your perfect fit. Prefer planning, analysis, or design? There's a place for you too. From hands-on trades to leadership and technical roles, this sector offers a wide range of rewarding careers, each with the power to shape the world around us.

Careers in Built Environment and Construction

The Built Environment and Construction sector in Greater London is thriving and it needs talent. Each year, over 5,000 new recruits are required to keep pace with demand for housing, infrastructure, and sustainable development. LSBU Group has a proud heritage: over 100 years of architectural education and 75 years of Building Services expertise. In fact, many of today's leading consultants began their careers at London South Bank University.

London is home to some of the UK's most ambitious projects, including Brent Cross Town (£7bn), Old Oak Park (£5bn), The Affordable Homes Programme (£4bn), Regeneration of Thamesmead (£1bn), and London Power Tunnels 2 (£750m). Add to this the Salisbury Square Development (£300m), plans for 500+ new high-rise buildings, and ongoing upgrades to transport and utilities – and the need for skilled professionals has never been greater. From new builds to maintenance and retrofit, this is a sector shaping the future of our city.

Companies often contact the LSBU Group looking for graduates or work placement students, which makes it much easier to enter the industry, there are lots of chances to make contacts and network

Lee Tobin
BEng (Hons) Building Services Engineering

There are plenty of opportunities open to you. Here are just a few ideas:

- Acoustics Consultant
- Architect
- Architectural Technologist
- Bricklayer
- Building Control Officer
- Building Site Inspector
- Building Surveyor
- Carpenter
- Cavity Insulation Installer
- Commercial Energy Assessor
- Construction Plant Operator
- Construction (Site) Manager
- Dry Liner
- Electrician
- Facilities Manager
- General Practice Surveyor
- Glazier
- Kitchen and Bathroom Designer or Fitter
- Landscaper
- Painter and Decorator
- Pipe Fitter
- Plasterer
- Plumber
- Quantity Surveyor
- Roofer
- Scaffolder
- Site management
- Stonemason
- Town Planner
- Welder

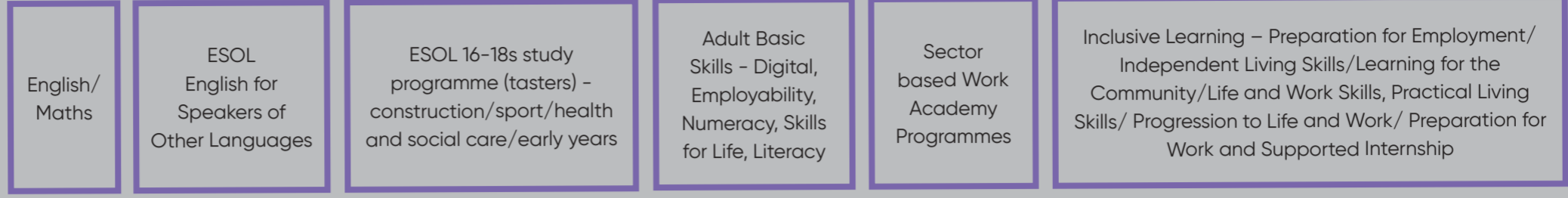
A Construction or Project Manager can expect an average annual salary of around **£49k–£59k**, with experienced roles reaching **£75k+**. Junior or Assistant Managers earn circa **£30k–£33k p.a.** A fully-qualified Quantity Surveyor will likely be paid around **£44k–£56k p.a.** rising to **£57k–£71k+** for a Senior Quantity Surveyor. A fully-qualified Architect can earn anything from **£40k–£55k p.a.**, (senior **£55k–£70k**, top roles **£90k+**).

BUILT ENVIRONMENT AND CONSTRUCTION



ENTRY LEVEL

Award, Certificate (ELC), Diploma
English for speakers of Other languages (ESOL)
Essential skills
Functional skills
Skills for Life



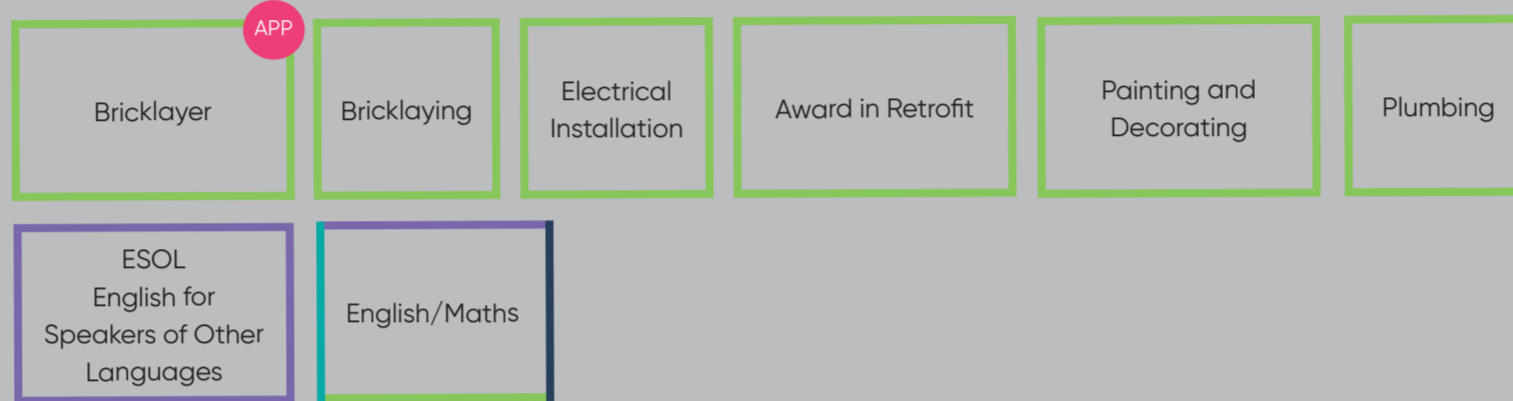
LEVEL 1

First Certificate, Award, Certificate, Diploma, ESOL
Essential skills
Functional skills
National vocational qualification (NVQ)



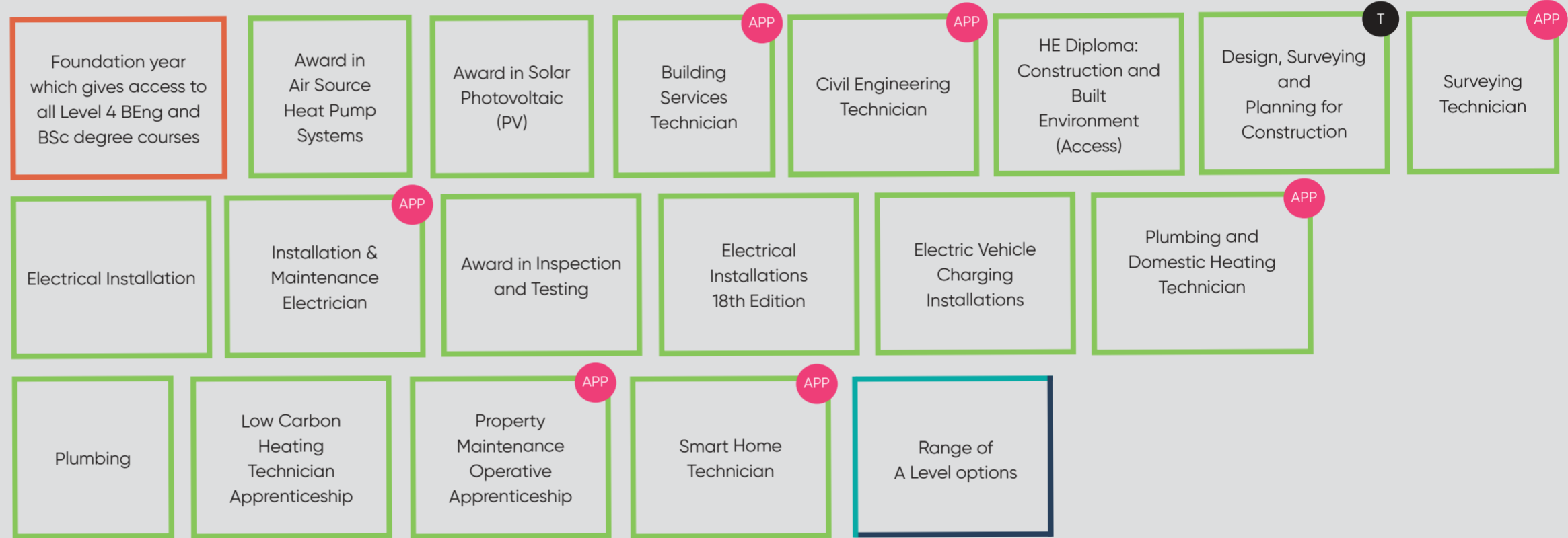
LEVEL 2

Intermediate Apprenticeship, Award, Certificate, Diploma, ESOL
Essential skills
Functional skills
NVQ
GCSE
Technical Certificate



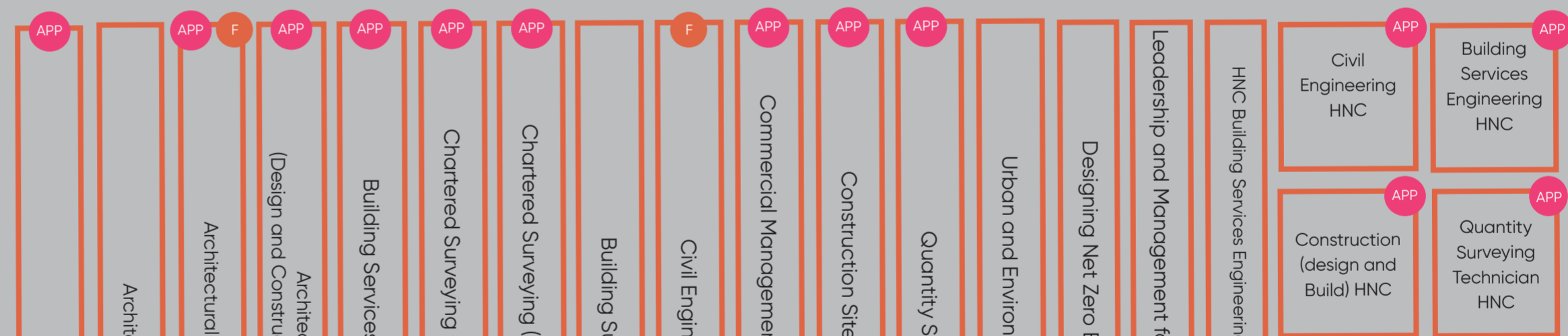
LEVEL 3

Access to HE Diploma
Advanced Apprenticeship
A Level
Applied General
Award, Certificate, Diploma, ESOL
NVQ
T Level
Technical Diploma



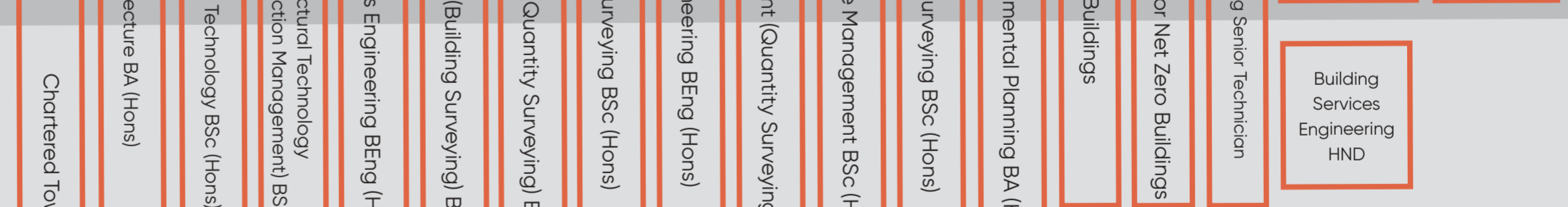
LEVEL 4

CertHE
Higher Apprenticeship
HNC
Award, Certificate, Diploma
NVQ



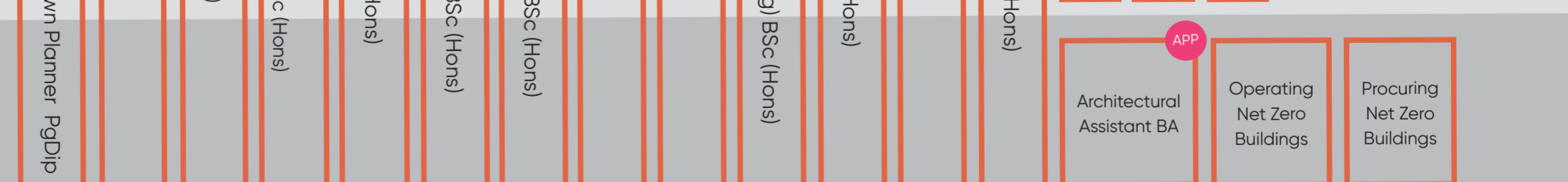
LEVEL 5

DipHE
Foundation Degree
HND
Award, Certificate, Diploma
NVQ



LEVEL 6

Degree Apprenticeship
Degree (with or without Honours)
Graduate Certificate/Diploma
Award, Certificate, Diploma
NVQ



LEVEL 7

Integrated Master's Degree
Award, Certificate, Diploma, NVQ, Master's Degree
Postgraduate Certificate / Diploma
Postgraduate Certificate in Education (PGCE)



LEVEL 8

Doctorate (PhD or DPhil)
Award, Certificate, Diploma

