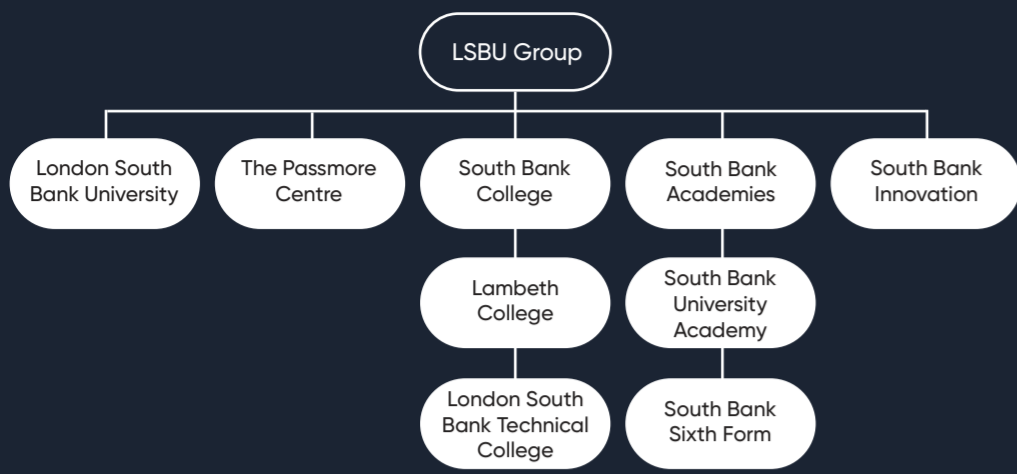


## Fit for the future, ready for the real world.

Our goal is to help you succeed, no matter what your age, background, or educational experience. We provide career-focused pathways across all levels, from Entry to Level 8, providing high-quality education and sector specific learning to prepare you for your life beyond education and qualifications.



Joining LSBU Group gives our students unrivalled access to educational opportunities, advice and guidance as well as sought-after apprenticeships and work placements. Our students are guaranteed progression to both LSBTC and LSBU\*.

Whether your next destination is within LSBU Group or elsewhere, we are one of a handful of providers who offer students the opportunity to progress to one of our new Level 4 one-year courses. Successful completion of this enables our students to fast-track to year 2 of an LSBU degree, saving money as well as providing a standalone qualification that employers recognise should you decide to leave your studies there.

\*after successful completion of a Group qualification that has a progression route

### Further information about careers in Health and Social Care can be found here:

- [www.healthcareers.nhs.uk](http://www.healthcareers.nhs.uk)
- [www.skillsforcare.org.uk](http://www.skillsforcare.org.uk)
- [www.everydaysdifferent.com](http://www.everydaysdifferent.com)
- [www.careerpilot.org.uk](http://www.careerpilot.org.uk)
- [www.nationalcareers.service.gov.uk](http://www.nationalcareers.service.gov.uk)
- [www.startprofile.com](http://www.startprofile.com)

Places on Health and Social Care courses, at all levels, are highly sought-after every year. If you believe this is the career pathway for you, but you lack hands-on experience, then we advise you to seek a placement prior to applying.

### The following websites are a great place to start:

- [www.england.nhs.uk/participation/get-involved/volunteering](http://www.england.nhs.uk/participation/get-involved/volunteering)
- [www.guysandstthomas.nhs.uk/careers/other-types-of-work/volunteering/volunteering.aspx](http://www.guysandstthomas.nhs.uk/careers/other-types-of-work/volunteering/volunteering.aspx)
- [www.southlondoncares.org.uk/get-involved](http://www.southlondoncares.org.uk/get-involved)
- [www.london.gov.uk](http://www.london.gov.uk)
- [www.kch.nhs.uk/about/get-involved/volunteering](http://www.kch.nhs.uk/about/get-involved/volunteering)
- [www.handsonlondon.org.uk](http://www.handsonlondon.org.uk)
- [www.healthwatchlambeth.org.uk/volunteer](http://www.healthwatchlambeth.org.uk/volunteer)

Part of **LSBU | GROUP**

**LAMBETH COLLEGE**  
Part of LSBU | GROUP

**LONDON SOUTH BANK TECHNICAL COLLEGE**  
Part of LSBU | GROUP

**South Bank University Academy**  
Part of LSBU | GROUP

**SBU SIXTH**  
Part of LSBU | GROUP

**LSBU**  
London South Bank University

**LSBU | GROUP**



# HEALTH AND SOCIAL CARE

**LSBU**  
London South Bank University

**LAMBETH COLLEGE**  
Part of LSBU | GROUP

**LONDON SOUTH BANK TECHNICAL COLLEGE**  
Part of LSBU | GROUP

**South Bank University Academy**  
Part of LSBU | GROUP

**SBU SIXTH**  
Part of LSBU | GROUP

## The Need for Health and Social Care Roles

A career in Health and Social Care is much more than just a job; it is a hugely-rewarding vocation and, for many, a true calling. It takes a very special person to succeed in this sector, but for those of you who possess the right personal qualities, dedication, and attitude, a lifetime of rewarding and fulfilling employment awaits you.



**3.2 million** people currently working in the Health and Social Care sector in the UK

There are around **152,000** job opportunities across England's Health & Social Care sector, reflecting strong demand & growing career prospects within a workforce of over **3.2 million**.

Health and Social Care remains one of the UK's most advertised job sectors, driven by high demand and ongoing workforce turnover.

## An Introduction to Health and Social Care

The **Health and Social Care** sector in England encompasses a wide range of organisations dedicated to improving physical and mental health, wellbeing, and independence. These include hospitals, clinics, care homes, nurseries, dental practices, and community outreach services. The sector is broadly divided into Healthcare – which focuses on diagnosing and treating medical conditions, primarily through the NHS – and Social Care, which offers non-clinical support such as child protection, youth services, residential care, and end-of-life support.

**Social Care** careers offer diverse entry points, with many roles requiring vocational training rather than academic degrees. In 2025, 67% of social care staff hold at least an NVQ Level 2 qualification, reflecting the sector's emphasis on practical, on-the-job training. Despite growing demand, the system faces challenges in access and workforce capacity. However, innovation and quality improvements continue to shape a more responsive and inclusive care landscape.

LSBU Group is one of the UK's leading providers of clinical education for allied health and related professions. Our healthcare programmes are designed to reflect current industry developments, ensuring students gain relevant, up-to-date skills. Through partnerships with over 60+ NHS organisations, students benefit from expert-led teaching and hands-on placements in hospitals, clinics, and community settings—preparing them to become confident, qualified healthcare professionals.



I chose this course because I want to build a career in the events industry, and it's given me the knowledge and real-world experience I need to move forward. Studying part time has allowed me to continue working while developing my skills, which has been essential for balancing my commitments. The course feels closely connected to the industry, especially through field trips and practical learning, which have really deepened my understanding beyond the classroom.

**Ayah B**  
Postgraduate Diploma in Midwifery  
LSBU



## Is Health and Social Care the Right Pathway for You?

While qualifications and placements provide essential knowledge and experience, a successful career in Health and Social Care also relies on key personal attributes and transferable skills. These include strong communication and active listening, the ability to build trust with individuals and teams, and confidence in applying professional judgement. You'll need solid organisational and IT skills, emotional resilience under pressure, and a high level of compassion, empathy, and discretion – qualities that ensure safe, person-centred care across diverse settings.

### Careers in Health and Social Care

With over 350 recognised roles across Health and Social Care, this sector offers a diverse and rewarding career landscape for those with the right ambition, values, and personal qualities. Whether you're just starting out or looking to progress, many roles allow you to build experience, gain qualifications, and advance along a flexible career pathway.

In Healthcare, you could be a frontline professional in a hospital ward, operating theatre, or community clinic – or work behind the scenes in labs, offices, or digital health services. Roles include Nurses, Midwives, Physiotherapists, Radiographers, and Biomedical Scientists, with opportunities to specialise or move into leadership.

In Social Care, you'll support individuals with non-clinical needs, helping them live healthier, more independent lives. Careers span home care, residential settings, day centres, and supported housing, with roles such as Social Workers, Care Coordinators, and Community Support Workers. The sector values empathy, resilience, and relationship-building skills.

As Health and Social Care services become more integrated, many roles now bridge both areas—such as Occupational Therapists, Healthcare Support Workers, and Health Promotion Specialists – reflecting shared values of compassion, collaboration, and person-centred care

**The NHS in England is estimated to require around 314,000 additional full-time equivalent staff by 2030/31 to deliver care at 2018/19 levels, assuming moderate productivity improvements.**

The salary for a Care Manager averages from around **£27k to £56k p.a.**, while some senior managers can earn up to **£72k**; Biomedical Scientist salaries range from **£28k to £46k**, rising to closer to **£60k to £75k** for consultant biomedical scientists who have reached the top of their field; a Dental Nurse can expect a starting salary of around **£23k** rising to **£33k** with experience; once qualified, a Health Promotion Specialist average wage is between **£27k to £32k**, rising to **£39k to £46k** with suitable experience. Those working at a very senior level can earn from **£40k to £46k**; newly-qualified Midwives and Nurses start at around **£28k** but once experienced the pay ranges from **£33k to £39k**. Those working in senior positions can earn **£40k to £46k**, while nurse consultants can earn up to **£78k**.

### There are plenty of opportunities open to you. Here are just a few ideas:

- Ambulance Driver
- Anaesthesia Technician
- Biomedical Scientist
- Care Manager
- Charity Officer
- Community Development Officer
- Community Support Worker
- Counsellor
- Dental Hygienist
- Dental Technician
- Dentist
- Dietician
- Health Promotion Specialist
- Healthcare Support Worker
- Mental Health Practitioner
- Midwife
- Nurse
- Occupational Therapist
- Paediatrician
- Paramedic
- Pharmacist
- Physiotherapist
- Public Health Manager
- Psychologist
- Social Worker
- Social Work Assistant
- Youth Worker

Our College prides itself on being an accessible, diverse, inclusive environment with a collective passion to improve human health, understand fundamental life processes and develop new technologies and treatments. As one of the largest providers of health education in London, we make a difference to our local communities and share knowledge worldwide. I look forward to working together with you to foster an outstanding student experience, develop innovative research and build impactful industry and community partnerships.

Dr Julia Warrenner,  
Executive Dean, College of Health and Life Sciences

# HEALTH AND SOCIAL CARE



**ENTRY LEVEL**  
Award, Certificate (ELC), Diploma  
English for speakers of Other languages (ESOL)  
Essential skills  
Functional skills  
Skills for Life

English/ Maths	ESOL - English for Speakers of Other Languages	ESOL 16-18s study programme (tasters) - construction/sport/health and social care/early years	Adult Basic Skills - Digital, Employability, Numeracy, Skills for Life, Literacy	Sector based Work Academy Programmes	Inclusive Learning - Preparation for Employment/Independent Living Skills/ Learning for the Community/Life and Work Skills, Practical Living Skills/ Progression to Life and Work/ Preparation for Work and Supported Internship
----------------	--	---	--	--------------------------------------	--

**LEVEL 1**  
First Certificate, Award, Certificate, Diploma, ESOL  
Essential skills  
Functional skills  
National vocational qualification (NVQ)

Introduction to Health, Social Care and Children's and Young People's Settings	Science	English/Maths	ESOL - English for Speakers of Other Languages	Personal and Social Development
--	---------	---------------	--	---------------------------------

**LEVEL 2**  
Intermediate Apprenticeship, Award, Certificate, Diploma, ESOL  
Essential skills  
Functional skills  
NVQ  
GCSE  
Technical Certificate

Health and Social Care	Pre T level in health and science Foundation Programme	Understanding the Safe Handling of Medication in H&SC	Science T Level Foundation Programme
ESOL English for Speakers of Other Languages	Applied Science	English/ Maths	

**LEVEL 3**  
Access to HE Diploma  
Advanced Apprenticeship  
A Level  
Applied General  
Award, Certificate, Diploma, ESOL  
NVQ  
T Level  
Technical Diploma

HE Diploma: Nursing (Access)	Health (supporting the Midwifery Team)	Health and Social Care	Health (supporting the Nursing Team)
Dental Nurse	Dental Technician	Laboratory Technician	Senior Healthcare Support Worker
Chemistry	Biology	Physics	Range of A Level options
			Sociology
			Psychology
			Counselling (Studies - CPCAB / Skills - NCFE)
			Health
			Applied Science

**LEVEL 4**  
CertHE  
Higher Apprenticeship  
HNC  
Award, Certificate, Diploma  
NVQ

**LEVEL 5**  
DipHE  
Foundation Degree  
HND  
Award, Certificate, Diploma  
NVQ

**LEVEL 6**  
Degree Apprenticeship  
Degree (with or without Honours)  
Graduate Certificate/Diploma  
Award, Certificate, Diploma  
NVQ

Integrated Masters in Chiropractic	Adult Nursing BSc (Hons)	Therapeutic Radiography (Integrated Degree Apprenticeship) BSc (Hons)	Children's Nursing BSc (Hons)	Dental Hygiene BSc (Hons)	Diagnostic Radiography BSc (Hons)	District Nursing BSc (Hons)	Operating Department Practice (Integrated Degree Apprenticeship) BSc (Hons)	Learning Disabilities Nursing BSc (Hons)	Mental Health Nursing BSc (Hons)	Midwifery BSc (Hons)	Occupational Therapy BSc (Hons)	Operating Department Practice BSc (Hons)	Diagnostic Radiography (Integrated Degree Apprenticeship) BSc (Hons)	Physiotherapy BSc (Hons)	Professional Nursing Practice BSc (Hons)	Specialist Community Public Health Nursing (Health Visiting/School Nursing) BSc (Hons)	Social Work BA (Hons)	Sport, Exercise & Health Science BSc (Hons)	Therapeutic Radiography BSc (Hons)	FDSc Nursing Associate	Dental Technology	Biology HNC	Forensic Science HNC	Supporting Health Care Professionals HNC	Therapeutic Counselling

**LEVEL 7**  
Integrated Master's Degree  
Award, Certificate, Diploma, NVQ, Master's Degree  
Postgraduate Certificate / Diploma  
Postgraduate Certificate in Education (PGCE)

Adult Nursing MSc/PgDip	Advanced Clinical Practice (Adult/Child/Mental Health) MSc	Advanced Paediatric Critical Care Practice MSc/PGCert/PGDip	Mental Health Nursing MSc/PGDip	Midwifery PGDip
Mammography PGCert	Learning Disabilities Nursing PGDip	Children's Nursing MSc/PGDip	Leadership in Health/Healthcare PGCert	Perinatal Mental Health MSc/PGDip/PGCert
District Nursing PgDip/MSc	Children and Young People's Imaging PGCert	Leadership and Service Improvement in Health Care MSc	Peer Supported Open Dialogue PGCert	PGCert Interventional Radiology
Leading Social Change MA	Occupational Therapy MSc/PGDip	Healthcare Chaplaincy and Wellbeing PgCert/PGDip/MA	Physiotherapy MSc (Pre-Registration)	Social Work MA
				Radiographic Reporting: Chest PGCert

**LEVEL 8**  
Doctorate (PhD or DPhil)  
Award, Certificate, Diploma

Allied Health Professionals	Health Studies	Health and Social Care	Nursing
-----------------------------	----------------	------------------------	---------